

THE WILMA



**THE MOST SPECTACULARLY
LAMENTABLE TRIAL OF
MIZ MARTHA WASHINGTON**

BY JAMES IJAMES
DIRECTED BY BRETT ASHLEY ROBINSON

MAR 17 - APR 5

WILMA
THEATER



Co-Artistic Directors Morgan Green Lindsay Smiling Yury Urnov
Managing Director Leigh Goldenberg

HONORARY PRODUCERS
Joan and William Goldstein

THE MOST SPECTACULARLY LAMENTABLE TRIAL OF MIZ MARTHA WASHINGTON

BY JAMES IJAMES
DIRECTED BY BRETT ASHLEY ROBINSON

CAST OF CHARACTERS

Nancy Boykin*.....Miz Martha Washington
Jayson Brown*.....William
Kimberly S. Fairbanks*.....Ann
Ciera Gardner.....Priscilla
Anthony Martinez-Briggs*.....Sucky Boy
Jada Mayo*.....Doll
Steven Anthony Wright*.....Davy

Dramaturg Brittany Onukwugha
Set Designer Colin McIlvaine
Lighting Designer Maria Shaplin
Costume Designer Nikki Delhomme
Sound Designer Jordan McCree
Choreographer Dominic Moore-Dunson
Music Director Daniel Espie
Care Consultant Krista Apple
Production Manager Matthew J. Zumbo
Technical Director Benny Henry
Resident Stage Manager Patreshettarlini Adams*
Assistant Stage Manager Sloane Duzy

* Member of AEA

CONTENT INFORMATION

This show contains strong language and depictions of sexual assault and violence. Suggested for ages 13+.

PRODUCTION SUPPORTERS

SEASON SPONSOR



The Cushman
Foundation



A NICE CONVERSATION ABOUT THE MOST SPECTACULARLY LAMENTABLE TRIAL OF MIZ MARTHA WASHINGTON

Brett Ashley Robinson (Director): What were your first thoughts about *Miz Martha* when you first read it?

Brittany Onukwugha (Dramaturg): I really loved it. James is using danger and edge in a really interesting way, and I've never seen a play about slavery like this before.

Brett: I agree. I'm adverse to plays about slavery mostly, because I don't like seeing Black and Brown bodies victimized. I don't want to see a Black person having a bad time.

Brittany: Exactly!

Brett: I'm really sensitive to it, but I love dark plays and dark content. I have a huge amount of untapped rage about racism and slavery and the way that this violence incentivizes America. James created a really great container for us to reenact some sense of justice in this play, with a lot of humor. This play is a great example of a version of a story of slavery that orients itself to the future. We should be talking about the river of rage and violence that's potent in America and that it is a poison that is in us. Until we correctly address the poison, and not by exploiting people in showing this violence over and over again, but in talking about justice and restitution and seeing a version of history that empowers enslaved people and challenges audiences, we're not really addressing anything.

Brittany: I found a letter from Abigail Adams to her sister Mary Cranch, and in this letter, she essentially tells Mary, "I just left Martha's house at Mount Vernon and she's nervous the slaves are going to kill her so it's been recommended that she free them by the end of the year." And let's note this letter was written December 21, 1800, just three days before this play takes place. Martha had people around her who could identify the violation of human rights caused by slavery. It can't be possible that she was just naive.

Brett: Martha thinks she can keep slaves because she's nice to them, which I think is a really important factor and feels contemporary. *Nice* is not the same thing as *kindness*; *nice* is not the same thing as *justice*; *nice* is not the same thing as the *right thing to do*. No matter how nice you are, if you're standing in the way of progress you'll get mowed down. I hope this version of the play makes it clear that no one cares if you're nice in the face of oppression.

Brittany: Niceness won't keep you safe.

Brett: Yes, and I think we need to be braver humans than that.



The Actors and Stage Manager employed in this production are members of Actors' Equity Association, the Union of Professional Actors and Stage Managers in the United States.

This Theatre operates under an agreement between the League of Resident Theatres and Actors' Equity Association, the Union of Professional Actors and Stage Managers in the United States.



The Director and Choreographer are members of the STAGE DIRECTORS AND CHOREOGRAPHERS SOCIETY, a national theatrical labor union.



UNITED SCENIC ARTISTS

The scenic, costume, lighting and sound designers in LORT Theatres are represented by United Scenic Artists, Local USA-829 of the IATSE.



NANCY BOYKIN (she/her) **MIZ MARTHA WASHINGTON**

Nancy is delighted to return to the Wilma where she was last seen in *When the Rain Stops Falling*; *Rapture*, *Blister*, *Burn*; *Raw Boys* and *Les Liaisons Dangereuses*. Other Philadelphia credits include: *The Arden* (*John*; *Superior Donuts*; *The Dead*), *Theatre Horizon* (*Circle*, *Mirror*, *Transformation*), *DTC* (*Outside Mullingar*), *Theater Exile* (*Really*), *Interact* and *Act II Playhouse*. Regional credits; Alabama

Shakespeare Festival, NY Shakespeare Festival, Arena Stage, Longwharf, The Alley and many years at InterAct in LA where she received the LA Drama Critics Circle Award for best actress in *Juno* and the *Paycock*. A long time supporter of new work, she would like to thank PlayPenn for originally developing this play and to Thom Weaver at Flashpoint for its first production. It is a privilege to be a part of a piece that tackles complicated issues, with insight, humor and imagination. Thank you to James Ijames, the Wilma and my family.



JAYSON BROWN (he/him) **WILLIAM**

Jayson is in his senior year as a musical theater major at Temple University and is honored for his debut here at Wilma Theater! Regional Credits: *Grease* (Doody) at North Shore Music Theatre, *A Wrinkle in Time* (Charles Wallace) at Arden Theatre, *Tuck Everlasting* (Jesse Tuck) at The Centre Theater, *Legally Blonde* (Grandmaster Chad/Ensemble) and *Grumpy Old Men* (Bo) at Arrow Rock Lyceum

Theater, *Tarzan* (Tarzan) at Media Theater. Community Theater Credits: *Spongebob the Musical* (Spongebob) and *Newsies* (Jack Kelly) at Upper Darby Summer Stage. TV Credit: "The Infinite Art Hunt" (Ty) on WHYY/PBS. He is grateful for his family and friends who always love and support him. Instagram: @jaysonnbrown__



KIMBERLY S. FAIRBANKS (she/her) **ANN**

Kimberly's credits include - Off-Broadway: The Sheen Center, 59E59, & The Mint Theatre. Regionally: Miami New Drama, Seattle Rep, The Eugene O'Neill Foundation, Crossroads Theater Company, Voyage Theater Company, Delaware Theatre Company, Walnut Street Theater, Wilma Theater, Philadelphia Theatre Company, InterAct Theatre Company, Theatre Exile, Azuka Theatre, Arden Theatre

Company and Pennsylvania Shakespeare Festival. Internationally: Edinburgh Fringe Festival 2024 & 2016. TV/Film: *Glass*, *The Upside*, *Brave the Dark*; Recurring roles: *Random Acts of Flyness*, *Law & Order*, *The Looming Tower*, *House of Cards*, *Do No Harm*, and *Cross*. Guest star: *FBI*, *Instinct*, *Elementary*, and *Madam Secretary*. Much love to my family & FOM. Learn more at: kimberlysfairbanks.com



CIERA GARDNER (they/them) **PRISCILLA**

Ciera is a Barrymore award nominated actor, mover, collaborator, teaching artist and professional silly goose. They graduated from the University of the Arts, as well as the Headlong Performance Institute studying dance theater and clown. Credits include: *Complete Works of William Shakespeare Abridged* (Gretna Theatre), *The Hobbit* (Arden Theatre), *Our Town* (New Light Theatre), *Nosejob* (Lightning

Rod Special), *The Climb* (Interact), *Fun Home* (New Light Theatre), *Macbeth* (Delaware Shakespeare), *Peer Gynt* (Enchantment Theatre), *Wine in the Wilderness* (Philadelphia Artist Collective), *Richard III* (Theatre in the X), *Peter and the Starcatcher* (Theatre Horizon), *The Gap* (Azuka Theatre), *Coriolanus* (Shakespeare in Clark Park.)



ANTHONY MARTINEZ-BRIGGS (they/them) **SUCKY BOY**

Anthony enjoys fashionable sneakers, well-cultivated herbs, and dynamic art that combats oppressive ideologies. They are a Wilma HotHouse company member, Bearded Ladies Associate Artist, and recipient of the 2023 F. Otto Haas Award for Emerging Artist. They wear many hats, including but not limited to writing, teaching, facilitating, music-making, and creating theater. They

are also known as "Us": the emcee and member of the award-winning band ILL DOOTS. Their album, *Divine Transmission*, is available on all major platforms. The LOVE received from the many communities that have welcomed them has remained a constant source of inspiration and gratitude. Their mission is to pay that love forward. They stand on the shoulders of many. They love their family, their tribe, and their wife, Tess.



JADA MAYO (she/her) **DOLL**

Jada is a Carnegie Mellon University graduate in Music Theatre. Recently trained at the Wilma's HotHouse Summer Institute. Credits include: *The Matchmaker* (Minnie Faye), *Mr. Marmalade* (Sookie/Emily/Sunflower), and *Ragtime*. Regional: *Hairspray* (The Munny) Film/TV: *Evil* (Paramount+) *Betty* (HBO), *High Maintenance* (HBO). Jada is thrilled to be working with the Wilma on *Miz Martha*.



STEVEN ANTHONY WRIGHT (he/him) **DAVY**

Steven is a Philadelphia based theater artist who's enjoyed serving audiences for over 20 years. He's elated to be back at the Wilma where he appeared in *The Convert*. Other companies include: The Arden Theater Company (*Wrinkle in Time-Father*), Theater in the X (*Fraternity-Turner Greystone*), Quintessence Theater Group (*Midsummer Night's Dream-Bottom*), Act II playhouse, 1812

Productions, EgoPo Classic Theater, Philadelphia Theater Company, Azuka Theatre, InterAct Theater Company and the Walnut Street Theater. My gratitude to the cast and crew. Peace, love and light.

WE'RE EITC ELIGIBLE!

The Wilma Theater's award-winning educational programs include *Wilmagination*, *AllStars*, and *Wilma Classroom*. Through our offerings, 300 students across Philadelphia are learning about theater and creating their own original art inspired by *The Most Spectacularly Lamentable Trial of Miz Martha Washington!*

For more than 25 years, our programs have provided a high-quality arts education to over 10,000 young people. Help us expand our impact by making an Educational Improvement Tax Credit Donation today. **Contact Institutional Giving Manager Katherine Clark at kclark@wilmatheater.org to learn more and make a donation.**

**JAMES I JAMES** (he/him) **PLAYWRIGHT**

James is a Pulitzer Prize-winning playwright, director, and educator. James' plays have been produced on Broadway, off-Broadway, and across the country by theatres, including *Orbiter 3*, *The National Black Theatre*, *The Public Theater*, and *Steppenwolf Theatre*. His awards and honors include the 2011 F. Otto Haas Award for an Emerging Artist, the 2015 Pew Fellowship for Playwriting, the 2015 Terrence McNally New Play Award, the 2017 Whiting Award, the 2019 Kesselring Prize, the 2020 Steinberg Prize, and the 2022 Pulitzer Prize in Drama for the Tony nominated *Fat Ham*. James is an associate professor at Columbia University where he serves as head of the playwriting concentration.

**BRETT ASHLEY ROBINSON** (she/her) **DIRECTOR**

Brett is a Pew Fellow as well as a Barrymore Award-winning actordirector, theatremaker, and educator based in Philadelphia. She is the 2021 winner of the PEN America/ Jean Stein Oral History Grant for her original work *Re-Enactment*. At the *Wilma: A Summer Day*, *Half God of Rainfall*, *Blood Wedding*, *There*, *Describe the Night*, *Mr Burns*, *Is God Is* (a radio play), *Fairview*, *Twelfth Night*, *Dance Nation*. As a director, she has worked with the Lantern, the Arden, 1812 Productions, Inis Nua, Theater Exile, the Bearded Ladies, Theatre Horizon, UArts, Drexel, University of North Carolina at Greensboro, and Philly Goat Project. She is a company member of Applied Mechanics, an immersive theater company based in Philadelphia, and a member of the HotHouse—the Tony award-winning Wilma Theater's resident acting company. She loves a buck a shuck oyster and Vino Verde. So much love to David and Owen. This one is for Latrelle—a true artist and inspirational educator.

**COLIN MCILVAINE** (he/him) **SET DESIGNER**

Colin is a Philadelphia-based, Barrymore nominated scenic designer named as one of American Theatre Magazine's 20 People to Watch. Recent credits include: *POTUS*, *Putnam County Spelling Bee*, *School Girls* (Arden Theatre Company); *The Play That Goes Wrong*, *This Is The Week That Is* (1812 Productions). Colin's recent associate design credits include: *Wonder the Musical* (American Repertory Theatre); *A Christmas Carol* (Guthrie Theater); *Pipeline* (Lincoln Center). In addition to his freelance career, Colin is adjunct faculty for Villanova University. B.A. University of Maryland; MFA Scenic Design Temple University. www.colinmcilvaine.com

**MARIA SHAPLIN** (she/her) **LIGHTING DESIGNER**

Maria is a Philadelphia-based theater designer who received her MFA in lighting design from Temple University. She has a BA in Anthropology and Sociology from Hampshire College. In addition to lighting, Maria practices graphic and web design. Although she works on many forms of performance, Maria is especially versed in devised processes, new play development, experimental performance and game design. Maria is the co-founder of Applied Mechanics, a collective that devises immersive, multi-narrative plays. Maria began her theatrical career as the resident lighting designer for The Riot Group, with whom she has toured all over the world. Maria received the 2018 Barrymore Award for Outstanding Lighting Design, and the 2015 Independence Fellowship in the Arts. Maria is a frequent collaborator with many companies in Philadelphia including The Riot Group, Swim Pony Performing Arts, InterAct, Arden, New Paradise Laboratories, 1812 Productions, Wilma Theater, *Orbiter 3*, People's Light, The Berserker Residents, Idiopathic Ridiculopathy Consortium, Quintessence Theater Group, Team Sunshine Performance Corporation, Theater Horizon, Nichole Canuso Dance Company, Lucidity Suitcase Intercontinental, UArts, PlayPenn, and Headlong Performance Institute.

**NIKKI DELHOMME** (she/her) **COSTUME DESIGNER**

Nikki's designs have been seen at the Maltz Jupiter Theatre, Bedlam Theatre Ensemble, Pig Iron Theatre Company, Arden Theatre Company, Santa Cruz Shakespeare, Los Angeles Theatre Center, Yale Repertory Theatre, Kimmel Center, Disney's REDCAT, Barrington Stage, Princeton University, Trinity Repertory, Broadway Sacramento, Shakespeare Theatre of New Jersey among many others. She's been nominated for two Philadelphia Barrymores, four Syracuse SALTS, two Los Angeles Garlands, and a Chicago Joseph Jefferson Award. Her designs for *The Birds* was chosen for the 2006 Prague Quadrennial to represent the United States. She's extensively worked with directors Rebecca Wright, Paul Mullins, Bonnie Monte, Stephen Svoboda, Jose Luis Valenzuela, Louisa Proske, and Flordelino Lagundino. She spent time teaching and mentoring costume and scenic design students as the interim Head of Design at Amherst College in 2014.

**JORDAN MCCREE** (they/he) **SOUND DESIGNER**

Jordan McCree is a sound artist based in Philadelphia. Their most recent collaborations include: *Good Bones* (Arden Theatre Company), *Caesar* (Philadelphia Theatre Company), fallawayinto (Ninth Planet), we come to collect: a flirtation with capitalism (Jenn Kidwell), *The Comeuppance* (Woolly Mammoth/Wilma Theater), *Good Person of Setzuan* (Wilma Theater), Grief Hotel (Clubbed Thumb), *Eternal Life Part 1* (Wilma Theater), *The Karamazovs* (film, Village Park Productions), *Fat Ham* (2021 World Premiere, Wilma Theater). They were one of the 2022 grant recipients to the 1/52 Project and most recently, they were awarded the 2025 Barrymore Award for Outstanding Sound Design (*The Comeuppance*, Wilma Theater). They are also a member of Philly-based, Barrymore Award winning, hip hop collective, ILL DOOTS. Their album, *Divine Transmission*, is available everywhere!

**DOMINIC MOORE-DUNSON** (he/him) **CHOREOGRAPHER**

Dominic is the 2025 Lloyd Richards New Futures Fellow with The Wilma Theater and an award-winning choreographer from Akron, Ohio. His work blends dance, storytelling, and social inquiry to explore the emotional and spiritual weight of growing up Black in post-industrial America. Named one of Dance Magazine's 2023 "25 to Watch," Dominic's choreography has been presented nationally and featured in The New York Times, The Washington Post, and the Akron Beacon Journal. A 2024 Ohio Arts Council Individual Excellence Award recipient and former resident artist at Headlands Center for the Arts and the Atlantic Center for the Arts, he continues to craft performances that invite audiences to feel, question, and remember—transforming personal stories into shared moments of truth and connection.

**DANIEL ESPIE** (he/him) **MUSIC DIRECTOR**

Dan is a Philadelphia-based pianist who has enjoyed a wide ranging career as a performer, theater musician, and teacher. Having received his MMus from the Royal Academy of Music in 2017 and his BM from Temple University's Boyer College of Music and Dance, Dan has performed with large ensembles including the No Name Pops, Ocean City Pops, and the Philadelphia Boys Choir, as well as smaller chamber groups including Philadelphia-based ENA Ensemble.

Dan is active in the Philadelphia musical theater community, having served most recently as the Associate Music Director for the Arden Theatre's production of Stephen Sondheim's *Assassins* (2023) and Associate Music Director for the Walnut Street Theatre's productions of *Rocky the Musical* (2022), *The Little Mermaid* (2021), and *Young Frankenstein* (2019). He has served as Music Director for various productions at People's Light and University of the Arts, and has conducted productions at Theatre Horizon and Quintessence Theatre.



BRITTANY ONUKWUGHA (she/her) DRAMATURG

Brittany is a Barrymore Award nominated actor and the Associate Producer of the Wilma Theater. She is excited to be collaborating on this production as a Dramaturg! Some Regional Credits: *The Half-God of Rainfall* (Dramaturg, Wilma Theater), *The Playboy of the Western World* (Dramaturg, Inis Nua Theatre Company), *An Army of Lovers* (Chloe, Azuka Theatre), *Julius Caesar* (Decius Brutus/Messala,

Delaware Shakespeare Festival), *The Complete Works of Jane Austen Abridged* (Self, Tiny Dynamite), *To Reach Across a River* (Batya, Theatre Ariel). She's also worked on productions in roles such as Associate Choreographer, Dance Captain, and Fight Captain. Website: www.brittanyonu.wordpress.com Social Media: @brittanyonu



PATRESHETTARLINI ADAMS (she/her) RESIDENT STAGE MANAGER

Pat is the Resident Stage Manager at the Wilma Theater. She has been with the organization since 1996. This season (2025-26) will be her 30th and she has recently celebrated over 100 productions with them! She has been a member of Actor's Equity for over 31 years. Pat's almost 40-year career encompasses work with the

Crossroads Theatre Company, New Brunswick, NJ; Freedom Theatre, Philadelphia, PA; New Victory Theater, NYC; Ford's Theater, Washington, DC; The National Black Theater Festival, Winston-Salem, NC; The National Black Arts Festival, Atlanta, GA.; the Standard Bank National Arts Festival, Grahamstown, South Africa. She has traveled internationally with the dance company, Noche Flamenca! Pat serves as a Board Member for Theatre Philadelphia; the Lay Leader of Emmanuel UMC; Lifetime member of the SMA and Board member for the Foundation for Stage Managers; a Board member-at-large for the National Theatre Conference. She has received the Bonaly Recognition for Stage Management (2017); the IUP Alumni Award of Distinction (2018); a 2020 recipient of the Del Hughes Award for Lifetime Achievement in the Art of Stage Management. In memory of 'Miss Thomi', for Love and Faith.



SLOANE DUZY (she/they) ASSISTANT STAGE MANAGER

Sloane is a non-union freelance stage manager born and raised in the Greater Philadelphia Area and a graduate of West Chester University. Recent credits include Assistant Stage Manager of *The Snow Queen*, *A Summer Day* (Wilma Theater), *A Raisin In The Sun* and *Peter Panto* (People's Light). Sloane is thrilled to be back at the Wilma for another show, and is even more excited for the rest of the season! Xoxo to

Mom, Dad, Reagan, and Garrett



KRISTA APPLE (she/her) CARE CONSULTANT

Krista is always glad to be back home on the Wilma stage. Some favorite Wilma credits include *A Summer Day*, *Twelfth Night*, *Fairview*, *The Cherry Orchard*, *Passage*, *Hamlet*, *The Hard Problem*, and *In the Next Room* (2011 Barrymore, Best Supporting Actress). Her additional Philadelphia theater credits include productions at the Arden, Walnut Street, Delaware Shakespeare Festival, Interact, the PAC, and more.

Screen credits include *Law & Order* and *Political Animals*. Also a teacher and coach, Krista has trained actors and educators at Theater for a New Audience, Arcadia University, Northwestern University (NHSI), and taught proudly for over a decade at University of the Arts' BFA Acting Program. Love to Colin and Scott, the masters of possibility. AEA/SAG-AFTRA. More at www.kristaapple.com.

FETE

SPRING SOIREE UNDER THE MARQUEE

APRIL 12, 2026

HONORING

VESNA TODOROVIĆ SACKS & HOWARD SACKS
Leadership Underwriters of the HotHouse Acting Company

&

TOASTING 30 YEARS OF THE WILMA ON BROAD STREET

For questions about the event, please contact Individual Giving Associate, Brittney Anderson at banderson@wilmatheater.org or call 215-893-9456 x108.

wilmatheater.org

Long before *Miz Martha* was announced for production at Wilma Theater, **it lived in development at PlayPenn.**

playpenn presents

james iJames

with nancy boykin & kimberly s. fairbanks

march 30 7:30pm

BUY TICKETS TODAY!

playpenn 20th

HOTHOUSE RESIDENT ACTING COMPANY

Founded by Artistic Director Emeritus Blanka Zizka, the HotHouse Company is the Wilma's acclaimed, award-winning resident actors. The company meets weekly to train, read plays, and develop their artistry.

HotHouse Season Sponsors – Vesna Todorovi□ Sacks and Howard J. Sacks



ANTHONY
MARTINEZ-BRIGGS



BI JEAN
NGO



BRANDON J.
PIERCE



BRETT ASHLEY
ROBINSON



CAMPBELL
O'HARE



JAYLENE
CLARK OWENS



JERED
MCLENIGAN



JUSTIN
JAIN



KEITH
CONALLEN



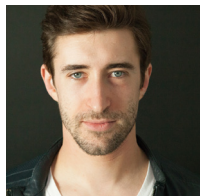
KISHIA
NIXON



KRISTA
APPLE



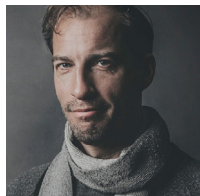
LINDSAY
SMILING



MATTEO
SCAMMELL



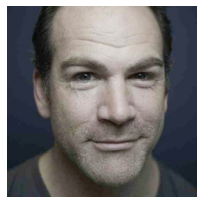
MELANYE
FINISTER



ROSS
BESCHLER



SARAH
GLIKO



STEVEN
RISHARD



SULI
HOLUM



TAYSHA
MARIE CANALES

THEATER FOR THE BRAVE IS FOR EVERYONE!

Won't you make it possible by making a gift today?

We are proud that *Miz Martha* is the focus of our 2025-26 Wilmagination, the Wilma's in-school residency program. This year, 300 public high school students across Philadelphia are learning about theater and creating their own original art inspired by *Miz Martha*, which they will present here on the Wilma stage later this spring.

Our generous donors make everything the Wilma does possible, from new play development to our HotHouse Resident Acting Company. Ticket sales cover just 30% of production costs. Donate now to make sure everyone has access to what's next at the Wilma Theater!

Whether you give a one-time gift, become a monthly donor, or find us on Venmo, the Wilma is grateful for your support.

HOW TO GIVE

- ONLINE wilmatheater.org/support
- CALL (215) 893-9456 x108
- EMAIL banderson@wilmatheater.org
- MAIL 265 S. Broad St, Philadelphia, PA 19107
- ADD a donation when you subscribe
- SCAN one of the QR codes!



Wilma Website



Wilma Venmo

2026 HOTHOUSE SUMMER INSTITUTE

JULY 6-24

The HotHouse Summer Institute invites professional and emerging actors (current college and graduate students welcome) to train on stage at the Wilma in the HotHouse Company's practice of embodied acting.



APPLY
TODAY!



2026/ 2027

WILMA THEATER SEASON



Celebrating
30 YEARS
ON BROAD ST.



Horsegirl & Cowdaddy

By DJ Hills
Directed by Adil Mansoor
A co-production with Soho Rep

SEPT 22 - OCT 4, 2026

A story of love and self-determination about a 30-something Trans woman named Horsegirl.



The Little Prince

By Rick Cummins and John Scoullar
Adapted from the book by Antoine de Saint-Exupéry
Directed by Yury Urnov

NOV 17 - 29, 2026

Whimsical adventures of love and friendship are recounted by a little prince from a faraway planet. Bring your kids, cousins, grandmas, and grown-ups.

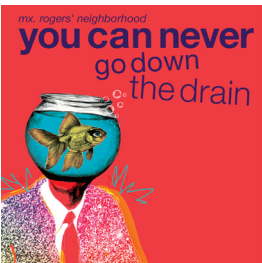


The Animal Farm Project

Lead Artist Justin Jain
Directed by Eva Steinmetz
Supported by The Pew Center for Arts & Heritage

MAR 30 - APR 11, 2027

A reflection on the production of Animal Farm that launched the Wilma in 1979, we'll explore questions of power, corruption, resistance, and hope.



Mx. Rogers' Neighborhood

You Can Never Go Down The Drain

Created by The Bearded Ladies Cabaret
Written by Rose Jarboe
Directed by Suli Holum

JUNE 2 - 13, 2027

An irreverently tender musical parody that asks: Would it kill you to be my neighbor?

SUBSCRIBE TODAY

A very Wilma season will celebrate 30 years on Broad Street.

Subscribers get:

- Priority Seating
- Free Exchanges
- Exclusive invitations and pre-sale options.

How to Subscribe:

- Visit wilmatheater.org
- Call 215-546-7824
- Scan the QR Code



Subscription Options:

4-Show Whenever Tickets

4 tickets, to be used however you want, all season long.

\$180
EARLY BIRD

(\$200 Regular Price)

4-Show Weekend Sub

4 tickets, one to each production Friday-Sunday.

\$140
EARLY BIRD

(\$180 Regular Price)

4-Show Weekday/ Preview Sub

4 tickets, one to each production, Tuesday-Thursday.

\$120
EARLY BIRD

(\$160 Regular Price)

4-Show Opening Night Sub

Tickets to opening night and post-show reception.

\$250
EARLY BIRD

(\$300 Regular Price)

(early bird pricing ends 6/1)

THANK YOU TO OUR HONORARY PRODUCERS

Joan & William Goldstein

THANK YOU TO OUR HONORARY PRODUCERS CIRCLE FOR THEIR SEASON-LONG SUPPORT

Val Arkoosh & Jeff Harbison
Tobey & Mark Dichter
Herman & Helen Fala
Andrew Gelber &
Don Schwarz
Linda & David Glickstein
Joan & William Goldstein

Edward & Susan Hoffman
Katherine Kelton &
Troy Graham
Chrissy Kind
Eva & Michael Leeds
Barbara & Don Parman
Theresa & John Rollins

Sharon & Irv Shapiro
Mari & Peter Shaw
Gayle & David Smith
Lisa U'Prichard
Dr. R. J. Wallner
Stephen Zeller

HOTHOUSE SEASON SPONSORS

Vesna Todorović Sacks
& Howard J. Sacks

SEASON SPONSOR



DOUBLETREE
by Hilton
PHILADELPHIA CENTER CITY

NONPROFIT AFFILIATE



2025-26 CORPORATE, FOUNDATION, AND GOVERNMENT SUPPORTERS



KNIGHT
FOUNDATION

Powered by Knight Foundation



THE SHUBERT
FOUNDATION INC.



Wyncote
Foundation

WilliamPennFoundation

VENTUROUS
Theater Fund

Bloomberg
Philanthropies

Digital
Accelerator
for Arts & Culture

\$250,000+ The John S. and James L. Knight Foundation; The Pew Center for Arts & Heritage; William Penn Foundation; Wyncote Foundation

\$100,000 - \$249,000 Bloomberg Philanthropies; Philadelphia Funder Collaborative for the Semiquincentennial; Street Factory Media; The Shubert Foundation; Venturous Theater Fund, a fund of Tides Foundation; The Waterman Trust

\$25,000 - \$99,000 The Albert M. Greenfield Foundation; Americans for the Arts; Hamilton Family Charitable Trust; The Horace W. Goldsmith Foundation; Independence Foundation; Joellen Brown Fund for Arts and Literacy Education; John Otto Haas Trust; Kline and Specter; The McLean Contributionship; Philadelphia Foundation; Roy Cockrum Foundation

\$10,000 - \$24,999 America250PA; Anonymous; Christian R. and Mary F. Lindback Foundation; Connelly Foundation; Dolfinger-McMahon Foundation; Independence Foundation; KPK Development Co, LP; The Patricia Kind Family Foundation; Pennsylvania Council on the Arts; Robert Wood Johnson Foundation; Suzanne Roberts Cultural Development Fund; Victory Foundation

\$1,000 - \$9,999 Abington Neurological Associates; Actors' Equity Foundation; Charlotte Cushman Foundation; The Christopher Ludwick Foundation; Federal Emergency Management Agency; Lapine Group; Philadelphia Activities Fund; Royal Norwegian Consulate General

\$999 and Under: Actors Equity; Fraser Advanced Information Systems

The Wilma Theater is a proud recipient of support from the Redevelopment Assistance Grant Program (RACP) from the state of Pennsylvania.

THANK YOU TO OUR ANNUAL FUND SUPPORTERS

\$15,000+

Anonymous (2)
Val Arkoosh & Jeff Harbison
Tobey & Mark Dichter
Linda & David Glickstein
Katherine Kelton & Troy Graham
Gay & Don Kimelman
Don & Barbara Parman
Mari & Peter Shaw
Dr. R. J. Wallner
The Waterman Trust

\$10,000-\$14,999

Andrew Gelber & Don Schwarz
William & Joan Goldstein
John & Theresa Rollins
Vesna & Howard Sacks
Gayle & David Smith
Lisa U'Prichard

\$5,000-\$9,999

Jerry & Mindy Goldberg
Gretchen Tenny Hall
Ed & Susan Hoffman
Robert Holum
Chrissy Kind
Eva & Michael Leeds
David Markus & Lisa Timmel
Mary Scanlon & Mark Stewart
Sharon & Irv Shapiro
Stephen Zeller

\$2,500-\$4,999

Sarah D. Anton
James Betts & Grace Kessler Betts
John & Fern Culhane
Shannon & Ted Farmer
The Haley Foundation
Tamara Hobbs
Katherine McKinstry
Dr. Joel & Mrs. Bobbie Porter
Jonathan & Judith Stein
Jeralyn Svanda

\$1,000-\$2,499

Anonymous (2)
Vijaya & Siv Anantuni
Mr. & Mrs. Robert Bancroft
Rachel Berger-Rosas
John Burmaster

Audry & Andy Carter
Gregory L. Coleman
Robert M. Dever
Sandi Foxx-Jones
Caroline Gart
Leigh Goldenberg & Aaron Bauman
Kathy Goldenberg
Seth Goldenberg
Carly Hall
Ralph & Natalie Hirshorn
Dr. & Mrs. Manuel Jain
Drs. Ken & Julie Kendall
Harvey & Virginia Kimmel
Andy & Valerie Kind-Rubin,
in memory of Patricia Kind
Ms. Carol Klein
Ken Kulak & Kate Hovde
Wendy & Robert Macdonald
Janice Fanning Madden
Matinee Ladies and Token Male
Jean McCray
Jim & Eleanor McGillin
Megan & Lou Minella
Jerome Napson,
in memory of Annie Richardson
Hung Nguyen
Quan Nguyen & Jessica Geyer
Kinohi Nishikawa
Eileen M O'Brien
Barbara Oldenhoff
Paul & Sandra Roberts
John Schapiro & Harriet Dichter
Karen Scholnick
Rob Segal
Dianne L. Semingson
The Sheehan Family
Paulette Singleton
George R. Smith
Valerie Smith
Evelyn G. Spritz
Andrew Stone
Donna & Andrew Wechsler
Rebecca Wells
The June & Steve Wolfson
Family Foundation
Dilys Winegrad

CREW

Resident Stage Manager:

Patreshettarlini Adams

Assistant Stage Manager:

Sloane Duzy

Deck Hands:

Elliot Greer, Anna Ryabova

Scenic Charge:

Sarah Court

Scenic Painter:

Anna Ryabova

Carpenters:

Elliot Greer, Anna Ryabova,
Nick Schwaman, David D'Angeli

Properties:

Kimitha Cashin

Wardrobe Supervisor:

Michelle Biddle-Rowland

Stitchers:

Rosie Owens

Draper:

Leigh Paradise

Light Board Operator:

Victoria Sills

Lighting Programmer:

Ayla Taffel

Electricians:

Victoria Sills, Heather Griffin,
Michael Hamlet, Nick Wacksman,
Alexa Pennington, Ayla Taffel, Annie Zulick,
Julia Franco, Cait Foster, Elliot Greer

Audio and Projections Engineer:

Eddie Smith

MARKETING

Director of Digital Marketing and Sales:

Rachel Robbins

Marketing and Design Manager:

Kristin Finger

Audience Engagement Manager:

Aubrie Williams

Ticketing and Data Associate:

Joey LaScala

PR Representative:

En Route

Director of Photography:

Leslie Rivera

BUSINESS AND ADMINISTRATION

Business Associate:

Minna Tran

Bookkeeper:

Carol McMahan

PRODUCTION

Production Manager:

Matthew J. Zumbo

Resident Stage Manager:

Patreshettarlini Adams

Technical Director:

Benny Henry

Crew Head/Flyman:

Elliot Greer

Head Electrician:

Victoria Sills

Assistant Electrician:

Ayla Taffel

Assistant Carpenter:

Anna Ryabova

Head of Properties:

Kimitha Cashin

Wardrobe Supervisor:

Michelle Biddle-Rowland

Head Audio Engineer:

Eddie Smith

OPERATIONS AND FACILITIES

Operations and Facilities Manager:

Peter Escalada-Mastick

BOX OFFICE

Box Office Associates:

Kylen Bailey, Chelsea Haynes, Grace Lazarz, Grace Miller,
Madelyn Owens, Nicholas Perez-Hoop, Kylie Rowland

House Managers:

Kylen Bailey, Blue Creeden, Elizabeth Feinschreiber, Kel Fleming, Gio
Maneri, Javier Mojica, Nicholas Perez-Hoop, Rasheda Sesay

WILMA STAFF MEMBERS

Co-Artistic Directors:

Morgan Green, Lindsay Smiling, Yury Urnov

Managing Director:

Leigh Goldenberg

Artistic Director Emeritus:

Blanka Zizka

ARTISTIC

Associate Artistic Director:

Kellie Mecleary

Associate Producer:

Brittany Onukwugha

HotHouse Company:

Krista Apple, Ross Beschler, Taysha Marie Canales, Keith Conallen,
Melanye Finister, Sarah Gliko, Suli Holum, Justin Jain, Anthony Martinez-Briggs,
Jered McLenigan, Kishia Nixon, Bi Jean Ngo, Campbell O'Hare, Jaylene Clark Owens,
Brandon J. Pierce, Steven Rishard, Brett Ashley Robinson, Matteo Scammell, Lindsay Smiling

HotHouse Lead Artists:

Brett Ashley Robinson and Jered McLenigan

HotHouse Head of Professional Training:

Suli Holum

Artistic Intern:

Juliette Nero Eddings

EDUCATION AND COMMUNITY PRACTICE

Director of Education and Community Practice:

Jess Conda

Community Practice Coordinator:

Mieke D

Resident Teaching Artist:

Lee Minora

Teaching Artists:

Carly Bodnar, Chantel Cumberbatch, Chris Davis,
Sohrab Haghverdi, Aarimoni Lee, Donovan Lockett, Anthony Martinez-Briggs,
Taylor J Mitchell, Campbell O'Hare, Rebecca Posner, Devon Sinclair

Partner Schools:

John Bartram High School, CAPA, Carver High School, Constitution,
Esperanza Academy Charter School, Mastery Charter School at Pickett, Academy at Palumbo,
Science Leadership Academy, West Philly High, Vaux High School

Classroom Teachers:

Lydia Azondekon, Anthony Beltran Rivera, Kathleen Butts, Kit Bradley,
Laura A Frost, Marlene Goebig, Jenn Hare, Jennifer Kramny, Wendi Mungai, Anissa
Weinraub, Dwight Wilkins

DEVELOPMENT

Development Director:

Jessica Betts

Institutional Giving Manager:

Katherine Clark

Individual Giving Associate:

Brittney Anderson

Development and Executive Assistant:

Danielle Pisechko

WILMA BOARD OF DIRECTORS

Officers

Katherine Kelton, Chair

Jerry Goldberg, Vice Chair

Herman C. Fala, Treasurer

Mark S. Dichter, Secretary

Ex-Officio

Leigh Goldenberg

Morgan Green

Lindsay Smiling

Yury Urnov

Board Members

Siv Anantuni

Rachel Berger-Rosas

Keith Conallen

Linda Glickstein

Caroline Hall

Jeff Harbison

Tamara Hobbs

Suli Holum

Kinohi Nishikawa

Don Parman

Mark Stewart

Lansie Sylvia

Emeritus

Harvey Kimmel

Sissie Lipton

James F. McGillin

John Rollins

Dianne Semingson

Mari Shaw

Evelyn G. Spritz

Dr. R. J. Wallner

Jeanne P. Wroblewski

THE VIDEOTAPING OR MAKING OF ELECTRONIC OR OTHER AUDIO AND/OR VISUAL RECORDINGS OF THIS PRODUCTION AND DISTRIBUTING RECORDINGS OR STREAMS IN ANY MEDIUM, INCLUDING THE INTERNET, IS STRICTLY PROHIBITED, A VIOLATION OF THE AUTHOR(S)'S RIGHTS AND ACTIONABLE UNDER UNITED STATES COPYRIGHT LAW. FOR MORE INFORMATION, PLEASE VISIT:

<https://concordtheatricals.com/resources/protecting-artists>

NEXT UP ON STAGE AT THE WILMA



THE AMERICA PLAY

By Suzan-Lori Parks
Directed by Lindsay Smiling
Co-Directed by Mark Wade

MAY 19 - 31

WILMA
THEATER